



# PQHY-P250YGM-A

WY Series 10hp Water Cooled Condensing Unit

R410A Heat Pump



The WY Series has all the benefits of the Y Series using water cooled condensing units. It is also able to produce heat recovery via the water circuit between heat source units, making for a very economical system.

- **High COP's possible thanks to increased efficiency and careful control of the system, allowing the largest operational water circuit temperature band ever**
- **Combining WY with waste heat energy provides unique application solutions**
- **Condensing units can be situated indoors allowing greater design flexibility and no limitation on building size**
- **Single inverter compressor**
- **Improved pipe run of 150m with a total system pipe length of up to 300m**
- **High Sensible Cooling Function - By raising the off coil temperature, a 10% increase in sensible cooling capacity over standard operation is achievable, the result being greater comfort for occupants**
- **Now able to operate with closed loop ground source water temperatures, bore hole and slinky applications are now possible**



Pictures not to scale

## Product Details

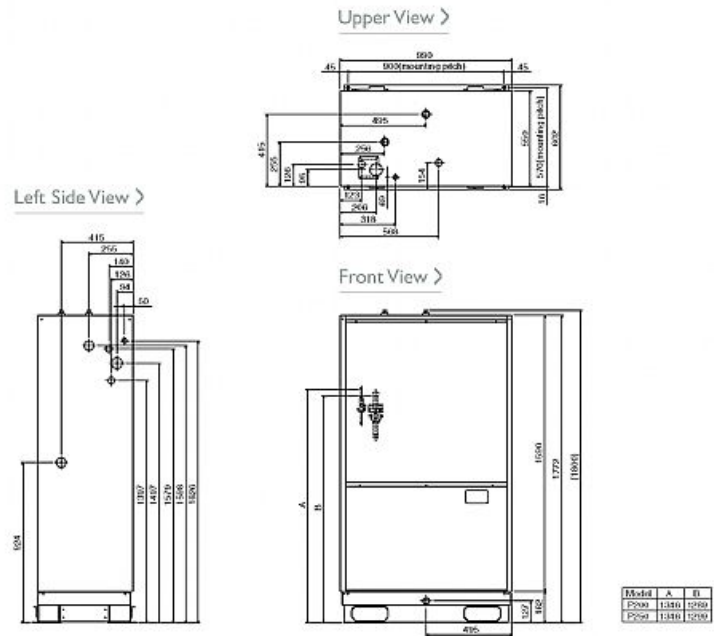
PQHY-P250YGM-A	
Capacity (kW):	
Heating (Nominal)	31.5
Cooling (Nominal)	28.0
Power Input (kW) Heating (Nominal)	5.8
Power Input (kW) Cooling (Nominal)	5.95
Max No. of Connectable Indoor Units	16
Noise (dBA)	47
Width - mm	990
Depth - mm	550
Height - mm	1800
Weight - kg	275
Electrical Supply	380-415v, 50Hz
Phase	3
Mains Cable No. Cores	4 + earth
Starting Current (A)	8
Running Current (A) - Heating	8.9
Running Current (A) - Cooling	9.1
Fuse Rating (BS88) - HRC (A)	25

### Piping Restrictions

Total Piping Length (m)	300
Furthest Piping Length (m)	150
Furthest Piping Length after 1st Branch (m)	40
Between Indoor and Outdoor Units - Height (m)	50
Between Indoor and Indoor Units - Height (m)	15

## Dimensions

PQHY-P250YGM-A



Telephone: 01707 282880

Email: [air.conditioning@meuk.mee.com](mailto:air.conditioning@meuk.mee.com) Website: <http://www.mitsubishielectric.co.uk/aircon>

Mitsubishi Electric reserves the right to make any variation in technical specification to the equipment described, or to withdraw or replace products without prior notification or public announcement.

Tel:  
Fax:

